

HUBBAY MINERALS INC.
CEILING INDEX

C00 INDEX
LCN LEED COMPLIANT MATERIAL LIST - PANELING/CEILINGS
C01-C06 TYPE C4 CEILING, AREA'S 02/01



(905) 683-8444 683-6923 FAX (905) 428-1463
e-mail address: info@ellrod.ca

PROJECT: HUBBAY MINERALS INC. 25 YORK STREET, 8th FLOOR TORONTO, ON		
JOB NO.:	8404D	DWG. NO.:
CHK'D BY:		C00
SCALE:	DATE: 06/04/11	DRAWN BY: RGP

FIRE-RATED WALL PANELING/CEILINGS: LEED COMPLIANT MATERIAL LIST

- 1 PANELS & REVEALS: FLAKEBOARD 'VESTA FR' PARTICLE BOARD (LEED COMPLIANT) 1/2" OR 3/4" THK. (FOR VENEER FINISH)
OR MEDITE FR 1/2" OR 3/4" THK. (FOR PAINT FINISH)
- 2 HANGING CLEATS (OPTION 1): 'DRICON FRT' 23/32" THK. FIR PLYWOOD
- 3 HANGING CLEATS (OPTION 2): 1/4" THK. ALUMINUM 'Z'-CLIPS
- 4 WOOD GLUE: 'TITEBOND' III (LEED COMPLIANT)



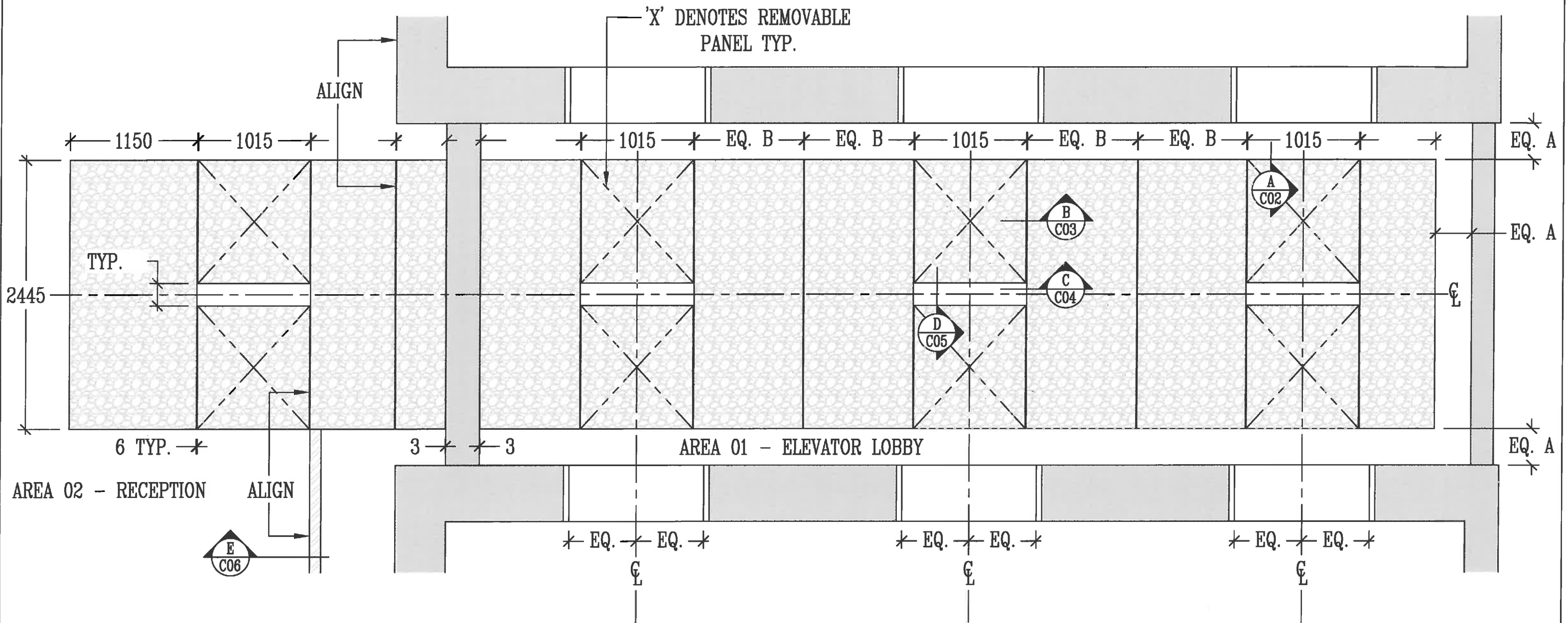
(905) 683-8444 683-6923 FAX (905) 428-1463
e-mail address: info@ellrod.ca

PROJECT:
HUBBAY MINERALS INC.
25 YORK STREET, 8th FLOOR
TORONTO, ON

JOB NO.: 8404D	DWG. NO.: FSC
CHK'D BY:	

SCALE:	DATE: MAR. 29, 11	DRAWN BY: EB
--------	-------------------	--------------

CEILING PANEL SUPPORT STRUCTURE BY OTHERS



REFLECTED CEILING PLAN - TYPE C4 CEILING, AREA'S 02/01

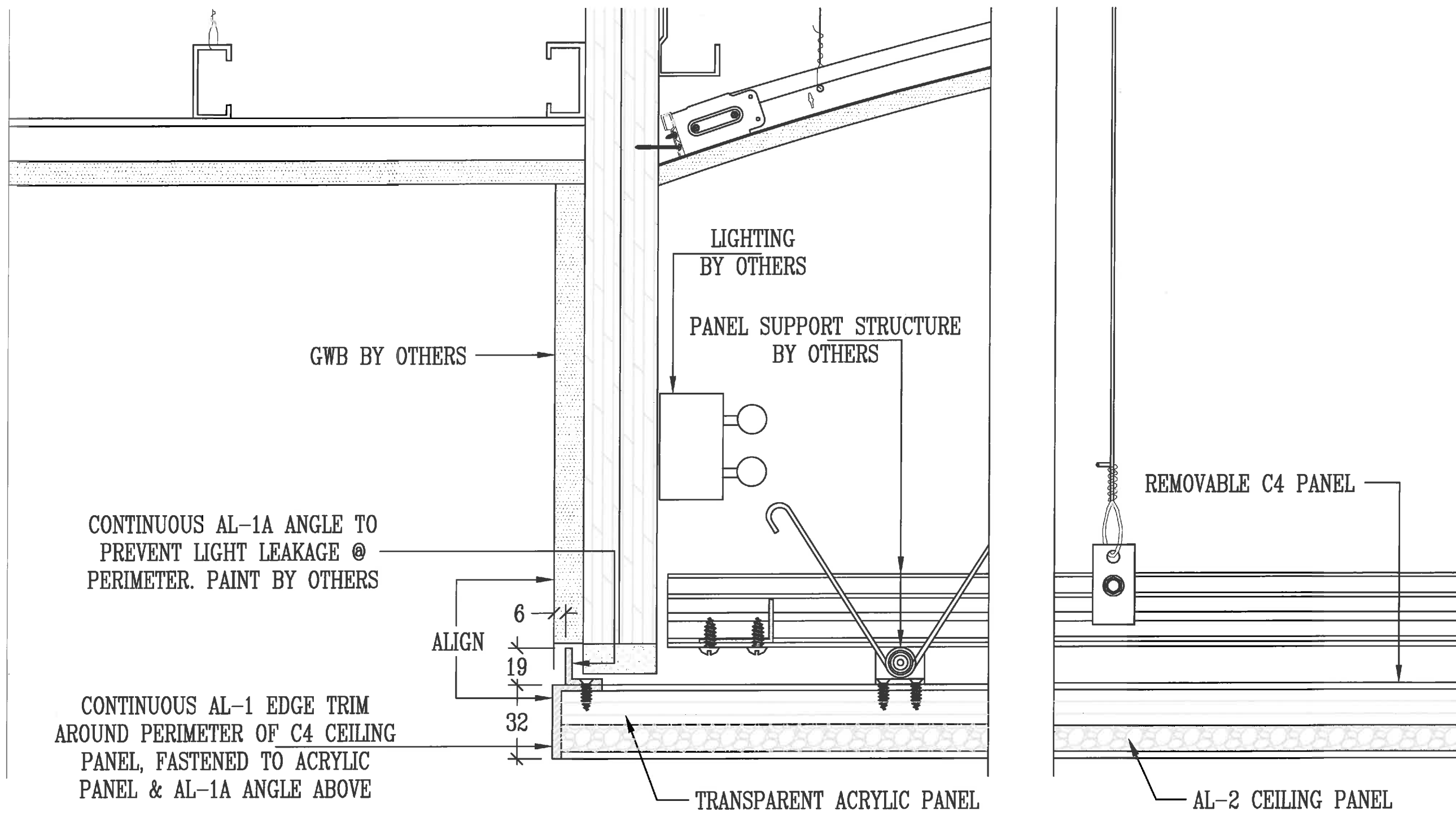
REFER TO LCN FOR LEED COMPLIANT MATERIAL LIST



(905) 683-8444 683-6923 FAX (905) 428-1463
e-mail address: info@ellrod.ca

CEILING PANELS: AL-2, CYMAT "ALUSION" FOAM PANEL, LARGE CELL, 2 SIDES OPEN & FINISHED, 12.7mm THICK, PART #AL-FG-12.7-LG-2S
BACKER PANELS: 13mm TRANSPARENT ACRYLIC PANEL
EDGE TRIM: AL-1, CLEAR ANODIZED ALUMINUM ANGLE, 3mm x 32mm x 25mm
PERIMETER ANGLE: AL-1A, ALUMINUM ANGLE, 3mm x 19mm x 19mm, FIELD PAINTED BY OTHERS
FIXTURE BOXES: WD-6, 13mm MDF, FIELD PAINTED BY OTHERS

PROJECT: HUBBAY MINERALS INC. 25 YORK STREET, 8th FLOOR TORONTO, ON	
JOB NO.: 8404D	DWG. NO.: C01
CHK'D BY:	
SCALE:	DATE: 06/04/11
	DRAWN BY: RGP



SECTION A

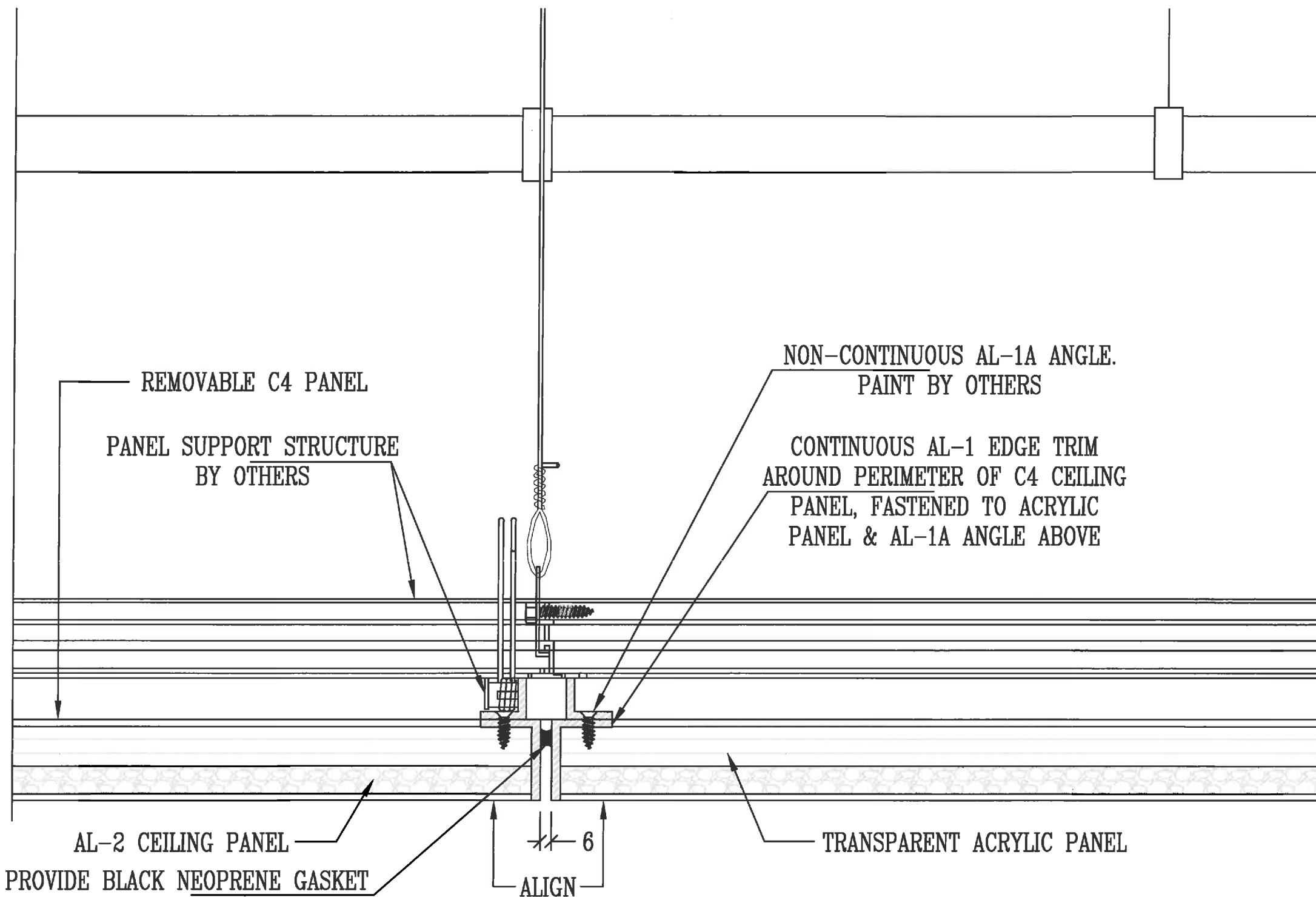
REFER TO LCN FOR LEED COMPLIANT MATERIAL LIST



(905) 683-8444 683-6923 FAX (905) 428-1463
e-mail address: info@ellrod.ca

CEILING PANELS: AL-2, CYMAT "ALUSION" FOAM PANEL, LARGE CELL, 2 SIDES OPEN & FINISHED, 12.7mm THICK,
PART #AL-FG-12.7-LG-2S
BACKER PANELS: 13mm TRANSPARENT ACRYLIC PANEL
EDGE TRIM: AL-1, CLEAR ANODIZED ALUMINUM ANGLE, 3mm x 32mm x 25mm
PERIMETER ANGLE: AL-1A, ALUMINUM ANGLE, 3mm x 19mm x 19mm, FIELD PAINTED BY OTHERS
FIXTURE BOXES: WD-6, 13mm MDF, FIELD PAINTED BY OTHERS

PROJECT: HUBBAY MINERALS INC. 25 YORK STREET, 8th FLOOR TORONTO, ON	
JOB NO.: 8404D	DWG. NO.: C02
CHK'D BY:	
SCALE:	DRAWN BY: RGP
DATE: 06/04/11	



SECTION B

PROVIDE BLACK NEOPRENE GASKET TO PREVENT LIGHT LEAKAGE TYP.

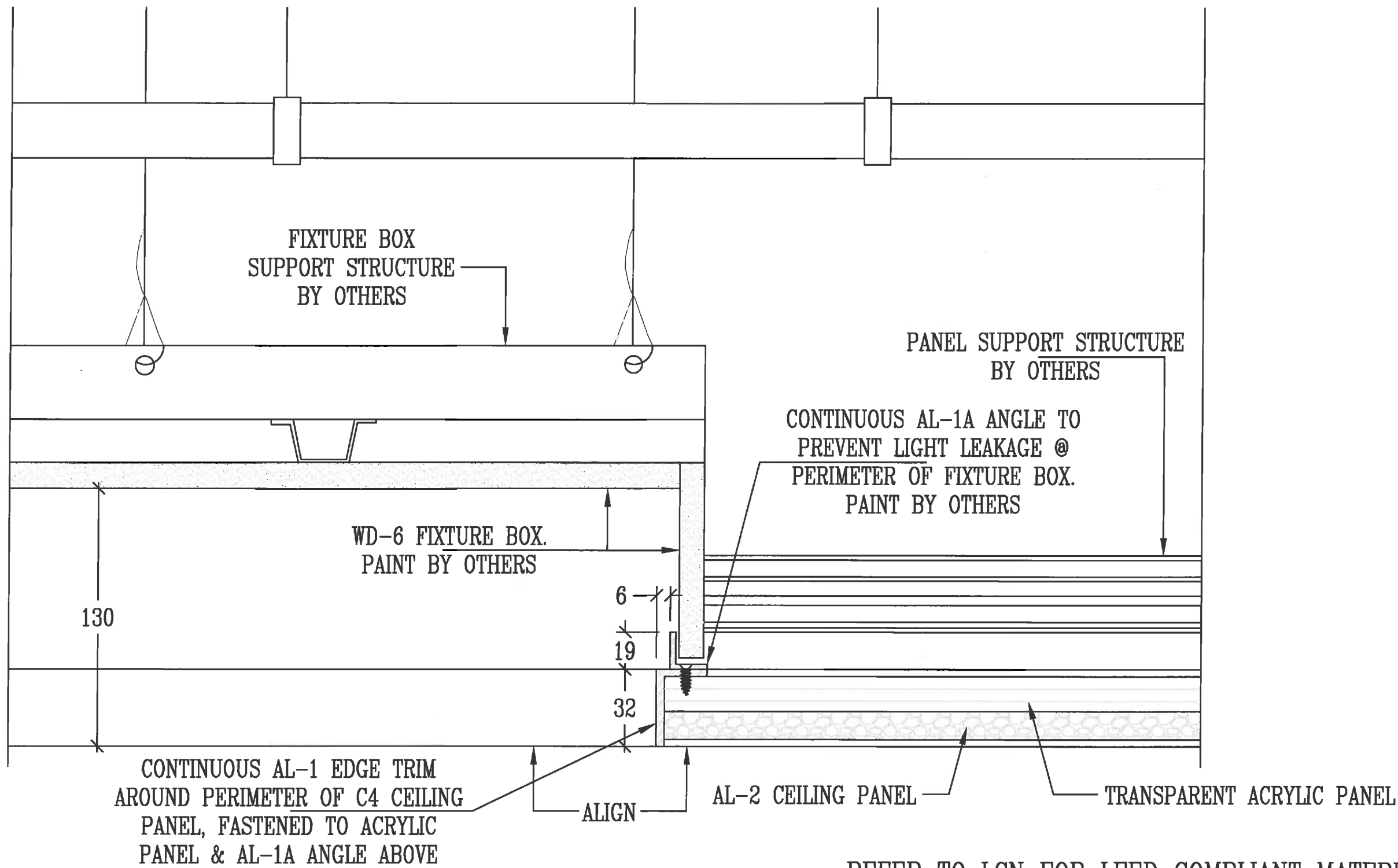
REFER TO LCN FOR LEED COMPLIANT MATERIAL LIST



(905) 683-8444 683-6923 FAX (905) 428-1463
e-mail address: info@ellrod.ca

CEILING PANELS: AL-2, CYMAT "ALUSION" FOAM PANEL, LARGE CELL, 2 SIDES OPEN & FINISHED, 12.7mm THICK, PART #AL-FG-12.7-LG-2S
 BACKER PANELS: 13mm TRANSPARENT ACRYLIC PANEL
 EDGE TRIM: AL-1, CLEAR ANODIZED ALUMINUM ANGLE, 3mm x 32mm x 25mm
 PERIMETER ANGLE: AL-1A, ALUMINUM ANGLE, 3mm x 19mm x 19mm, FIELD PAINTED BY OTHERS
 FIXTURE BOXES: WD-6, 13mm MDF, FIELD PAINTED BY OTHERS

PROJECT:		HUBBAY MINERALS INC. 25 YORK STREET, 8th FLOOR TORONTO, ON	
JOB NO.:	8404D	DWG. NO.:	C03
CHK'D BY:			
SCALE:	DATE:	DRAWN BY:	
	06/04/11	RGP	



SECTION C

REFER TO LCN FOR LEED COMPLIANT MATERIAL LIST

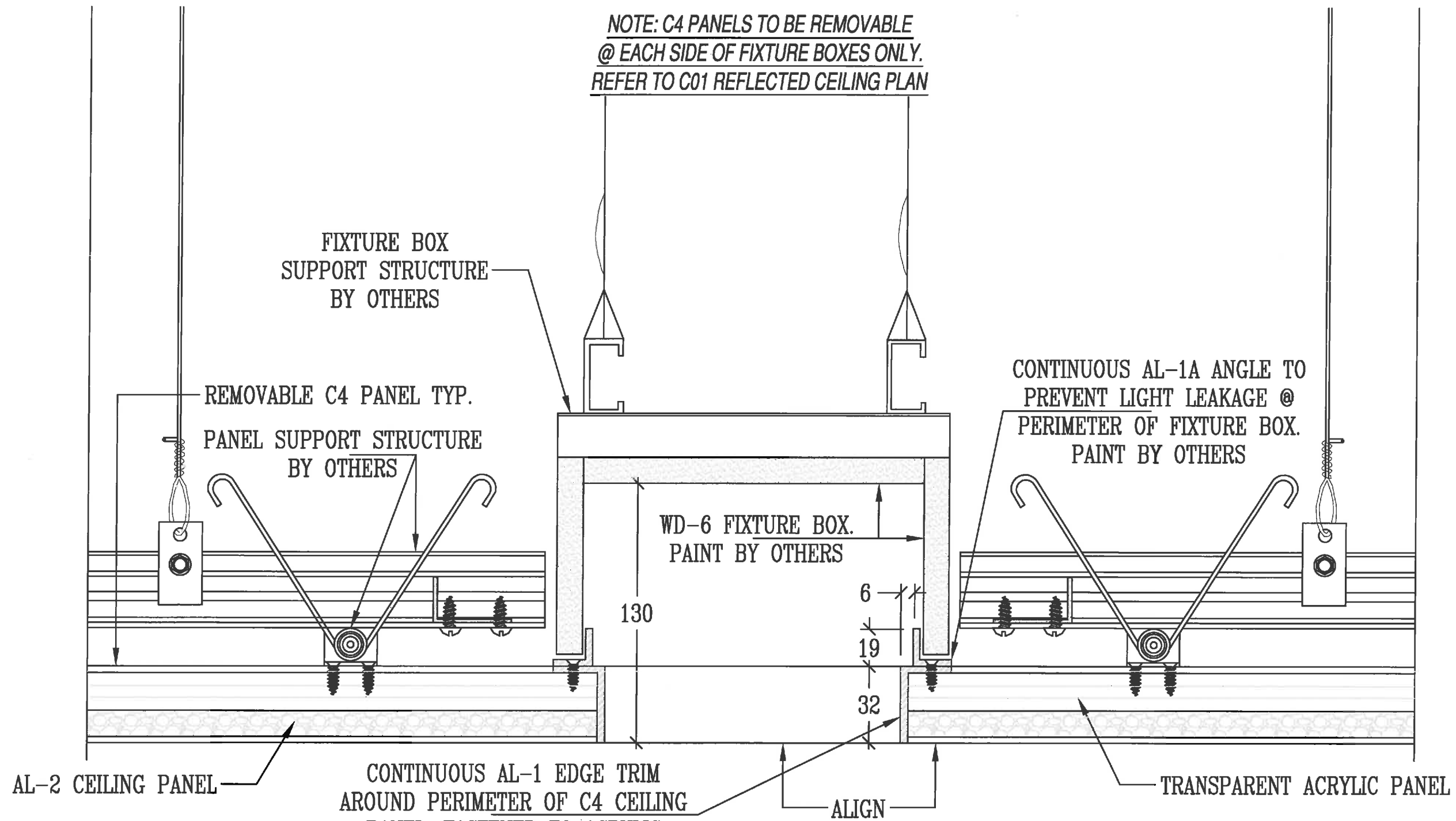


(905) 683-8444 683-6923 FAX (905) 428-1463
e-mail address: info@ellrod.ca

CEILING PANELS: AL-2, CYMAT "ALUSION" FOAM PANEL, LARGE CELL, 2 SIDES OPEN & FINISHED, 12.7mm THICK, PART #AL-FG-12.7-LG-2S
 BACKER PANELS: 13mm TRANSPARENT ACRYLIC PANEL
 EDGE TRIM: AL-1, CLEAR ANODIZED ALUMINUM ANGLE, 3mm x 32mm x 25mm
 PERIMETER ANGLE: AL-1A, ALUMINUM ANGLE, 3mm x 19mm x 19mm, FIELD PAINTED BY OTHERS
 FIXTURE BOXES: WD-6, 13mm MDF, FIELD PAINTED BY OTHERS

PROJECT: HUBBAY MINERALS INC. 25 YORK STREET, 8th FLOOR TORONTO, ON		
JOB NO.:	8404D	DWG. NO.:
CHK'D BY:		C04
SCALE:	DATE: 06/04/11	DRAWN BY: RGP

**NOTE: C4 PANELS TO BE REMOVABLE
@ EACH SIDE OF FIXTURE BOXES ONLY.
REFER TO C01 REFLECTED CEILING PLAN**



SECTION D

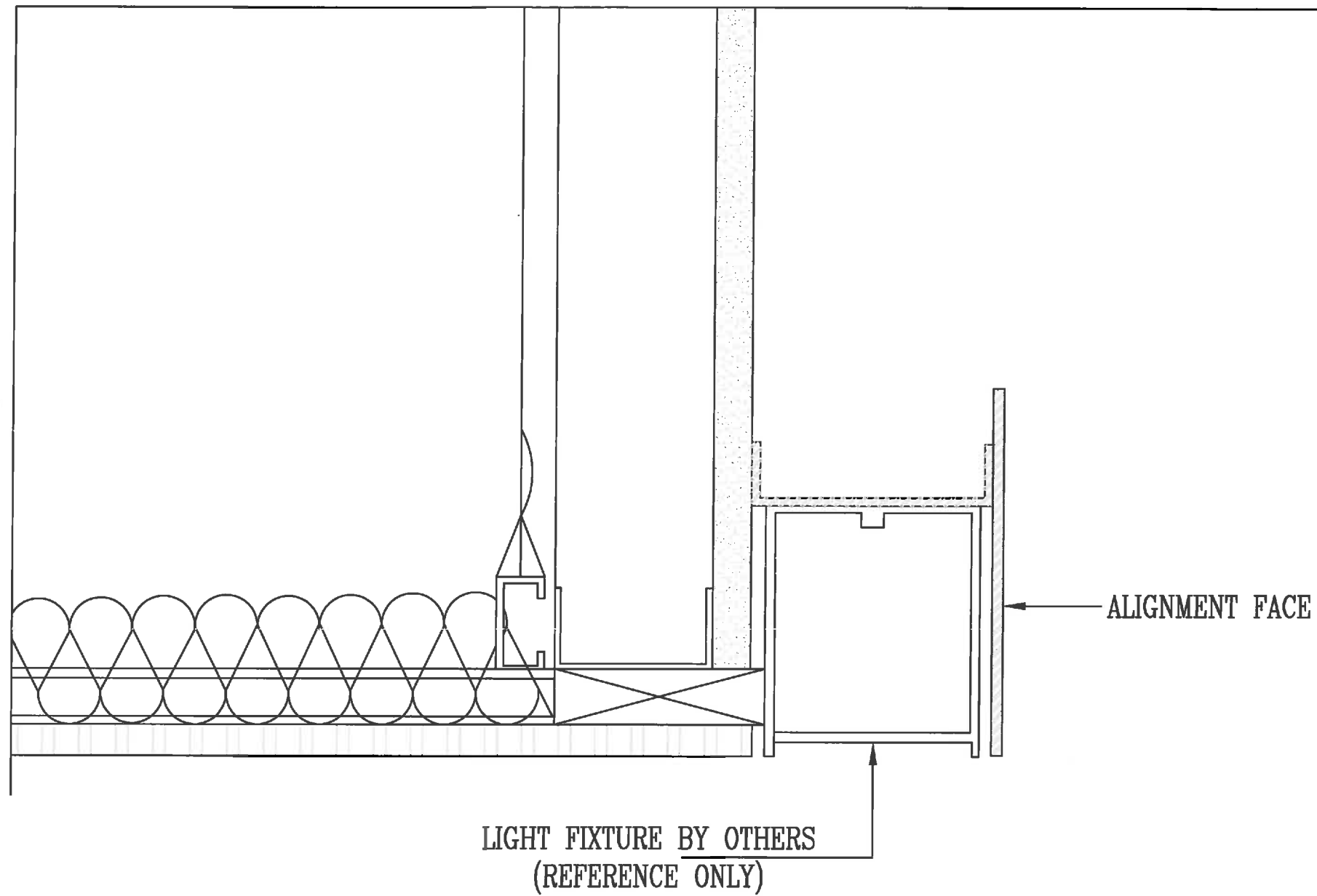
REFER TO LCN FOR LEED COMPLIANT MATERIAL LIST



(905) 683-8444 683-6923 FAX (905) 428-1463
e-mail address: info@ellrod.ca

CEILING PANELS: AL-2, CYMAT "ALUSION" FOAM PANEL, LARGE CELL, 2 SIDES OPEN & FINISHED, 12.7mm THICK, PART #AL-FG-12.7-LG-2S
BACKER PANELS: 13mm TRANSPARENT ACRYLIC PANEL
EDGE TRIM: AL-1, CLEAR ANODIZED ALUMINUM ANGLE, 3mm x 32mm x 25mm
PERIMETER ANGLE: AL-1A, ALUMINUM ANGLE, 3mm x 19mm x 19mm, FIELD PAINTED BY OTHERS
FIXTURE BOXES: WD-6, 13mm MDF, FIELD PAINTED BY OTHERS

PROJECT: HUBBAY MINERALS INC. 25 YORK STREET, 8th FLOOR TORONTO, ON		
JOB NO.:	8404D	DWG. NO.:
CHK'D BY:		C05
SCALE:	DATE: 06/04/11	DRAWN BY: RGP



SECTION E - SHOWN FOR ALIGNMENT PURPOSES ONLY, REFER TO C01



(905) 683-8444 683-6923 FAX (905) 428-1463
e-mail address: info@ellrod.ca

CEILING PANELS: AL-2, CYMAT "ALUSION" FOAM PANEL, LARGE CELL, 2 SIDES OPEN & FINISHED, 12.7mm THICK,
PART #AL-FG-12.7-LG-2S
BACKER PANELS: 13mm TRANSPARENT ACRYLIC PANEL
EDGE TRIM: AL-1, CLEAR ANODIZED ALUMINUM ANGLE, 3mm x 32mm x 25mm
PERIMETER ANGLE: AL-1A, ALUMINUM ANGLE, 3mm x 19mm x 19mm, FIELD PAINTED BY OTHERS
FIXTURE BOXES: WD-6, 13mm MDF, FIELD PAINTED BY OTHERS

PROJECT: HUBBAY MINERALS INC. 25 YORK STREET, 8th FLOOR TORONTO, ON		
JOB NO.:	8404D	DWG. NO.:
CHK'D BY:		C06
SCALE:	DATE: 06/04/11	DRAWN BY: RGP